

Osaka University Kasugaoka House



Usage Guide

Purpose of Establishment

In order to maintain the quality of accommodations suitable for inviting talented people abroad while covering the needs of the university hospitals and joint research collaborators.

Intended Users

- International researchers and accompanying persons engaged in long-term research at Osaka University.
- Short-stay joint research collaborators.
- Outpatients of Osaka University Hospital and their accompanying persons.
- In addition, persons that are approved.

Long-term and short-term accommodation for international researchers and joint research collaborators

**Scheduled to open
from June 2010**

Information



Specialist (in charge of Kasugaoka House)

Facilities Planning Division, Department of Facilities
Osaka University Administration Bureau
TEL : 06-6879-7948 FAX : 06-6879-7139
E-mail : kasugaoka-house@star.jim.osaka-u.ac.jp

Name

Osaka University Kasugaoka House

Address

7 Minami-Kasugaoka, Ibaraki, Osaka

Structure · Scale

Three-storied reinforced concrete building

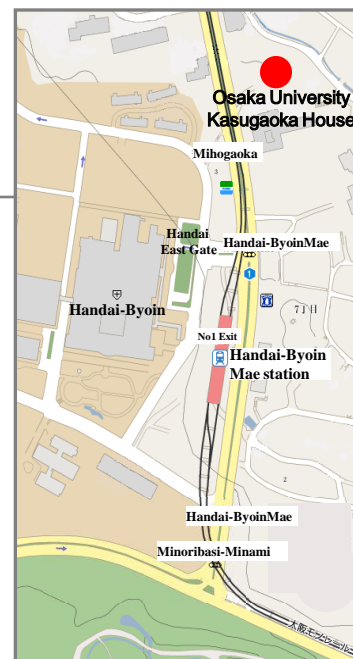
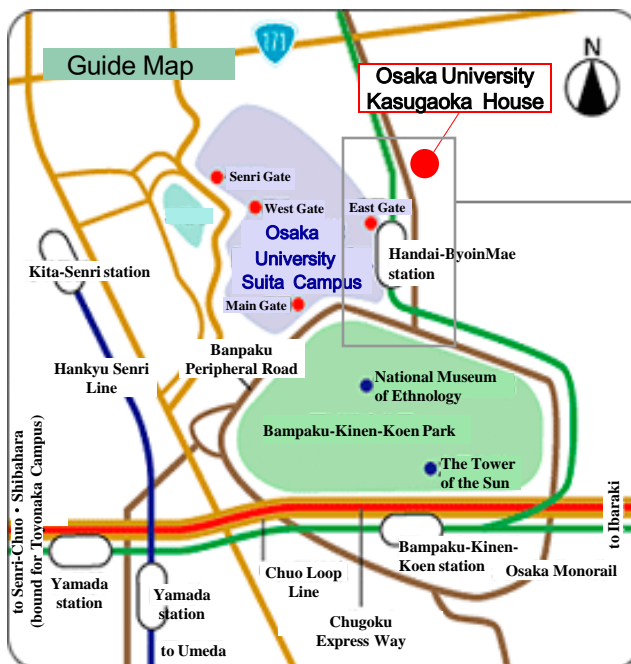
Access

Osaka Monorail: Get off at "Handai-Byoin-Mae Station". (5 minute walk)

Hankyu Bus: Take bus bound for "Handai-Honbu-Mae" or "Ibaraki-Mihogaoka" from Senri-Chuo Station, or take bus bound for "Handai-Byoin-Mae" at Kita-Senri Station.

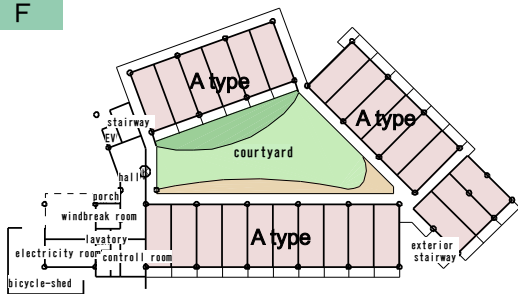
Kintetsu Bus: Take bus bound for "Handai-Honbu-Mae" from Ibaraki-Shi station on the Hankyu Kyoto Line.

※Hankyu Bus and Kintetsu Bus : Get off at "Handai-Byoin-Mae". (5 minute walk)

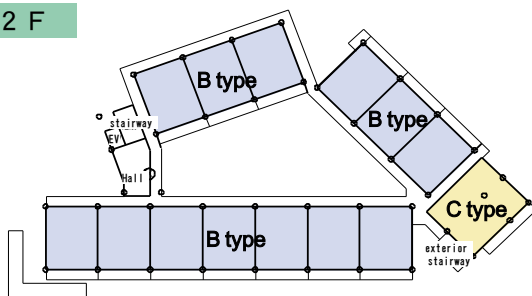


Floor planning · Room arrangement

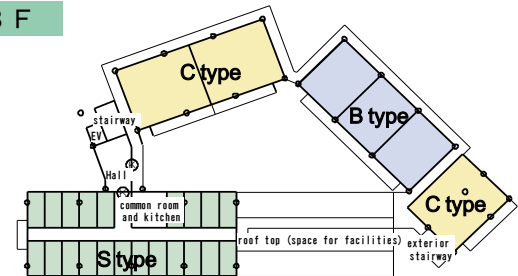
1 F



2 F



3 F



Osaka University Kasugaoka House

Quality & Support

TV, furniture, home electric appliances, washing machine, refrigerator, air-conditioning etc.

Maintenance of the courtyard for residents to socialize

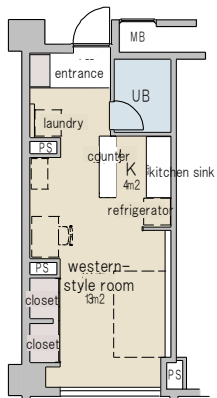
Supported by staff that speak English

5 minutes by walk to Handai-Byoin-Mae station

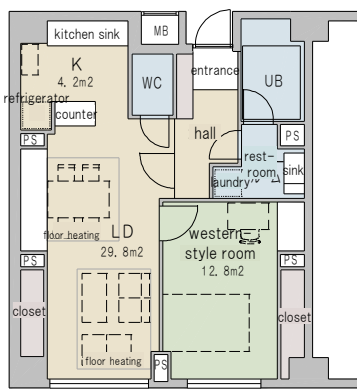
Internet support (contracts made separately)

Security measures with self-locking

A type

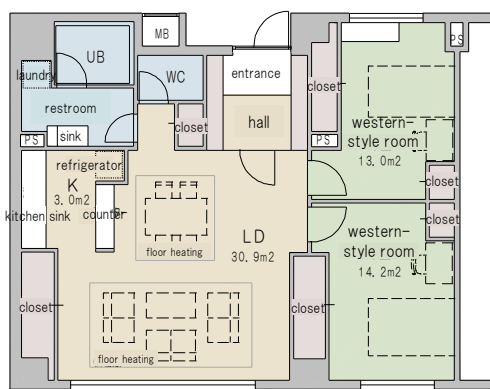


B type



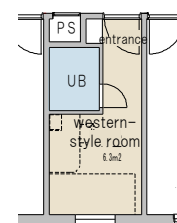
(unfurnished rooms are available)

C type



S type

(short-term room)



Outline of structure

room type	Atype (furnished w/electrical appliances)	Btype (furnished w/electrical appliances)	Btype (unfurnished and w/o electrical appliances)	Ctype (furnished w/electrical appliances)	Stype (short-term)
room area	32㎡	65㎡	65㎡	97㎡	12㎡
number of rooms	25rooms	9rooms	7rooms	4rooms	21rooms
floor layout	1K western-style 13㎡ K 4㎡	1LDK western-style 13㎡ LDK 34㎡	1LDK western-style 13㎡ LDK 34㎡	2LDK western-style 14㎡ western-style 13㎡ LDK 34㎡	1 western-style 6㎡
rent	monthly fee ¥70,000 (including common service charge)	monthly fee ¥120,000 (including common service charge)	monthly fee ¥100,000 (including common service charge)	monthly fee ¥180,000 (including common service charge)	daily rent ¥3,000
(A · B · C) Actual expenses of utilities and communication fees are charged separately.				※ Note that prices are subject to change.	
(S) Actual expenses of utilities and communication fees are included on above monthly lodging fee.				※ Note that prices are subject to change.	