



OSAKA UNIVERSITY

PROSPECTUS 2017

OSAKA UNIVERSITY

1-1 Yamadaoka, Suita, Osaka 565-0871 Japan

www.osaka-u.ac.jp

Published by: Osaka University
Edited and Distributed by:
International Affairs Division,
Department of International Affairs
Created by: 



Live Locally, Grow Globally

生活于地域，发展于世界

지역에 살며 세계로 발전해 나가다

Дэлхийн хэмжээнд сэтгэж, нутгийн хэмжээнд үйлдэх

Berjiwa Lokal, Bertumbuh Mengglobal

Buhay Lokal, Unlad Global

ท้องถิ่นเป็นฐาน ฐานสู่สากล

Sống ở địa phương, vươn ra thế giới.

ကိုယ်မြေမှာနေ ၊ ကမ္ဘာကြီးကို ဖွံ့ဖြိုးတိုးတက်စေ။

देश में निवास, विश्व में विकास

رہیں مقامی ، بنیں آفاقی

عش في بيئتك وانفتح على العالم

زندگی منطقه‌ای، بالندگی جهانی

Bölgesel yaşamak, küresel büyümek

Maisha ya Karibu, Hukuwa Mbali Duniani

Живи локально, расти глобально

Élj lokálisan, nőj globálisan!

At leve lokalt og vokse globalt.

Lev lokalt, väx globalt

Leb in der Region und bilde dich in der Welt aus.

Vivre localement, grandir universellement

Vivere localmente, crescere globalmente

Viviendo en la región, proyectándose al mundo.

Viver Localmente, Crescer Globalmente!

地域に生き世界に伸びる

Open Education

Train students to search for the truth and explore knowledge beyond university campuses in the larger society.

Achieve Open Education by integrating resources in the university with those in civil society, government and industry to discover new knowledge relevant and meaningful to society.

Open Research

Support Open Research by respecting the freedom and encouraging the passion of individual researchers. Establish academic partnerships across the world so as to cultivate new frontiers of knowledge.

Open Community

Help solve local and global issues and contribute to optimal social development through our strength in science, culture, art and medicine. Create an Open Community, a social space where diverse knowledge and people meet and interact.



Open Innovation

Initiate a fundamental shift from “industry-university collaboration” to “industry-university co-creation.” Discover new themes and tasks in basic science by assessing emerging social demands. Undertake Open Innovation through which to create new social values.

Open Governance

Exceed the expectations of society through continual reform and improvement by maximizing the agency of every member of the university. Implement Open Governance: a solid and transparent university management system that balances leadership and consensus.

Openness

We define it as individuals and organizations sharing a common foundation, competing and building together, overcoming internal and external obstacles, and collaborating to create new knowledge and lasting impact for society.

Shojiro NISHIO
President


Japanese Nobel Laureate, Hideki YUKAWA's favorite blackboard
Hideki YUKAWA received a PhD degree from Osaka University and worked at Osaka University from 1933 to 1939. This blackboard that Dr. YUKAWA regularly used at Columbia University was donated to Osaka University in 2014.



History

Osaka University's roots can be traced to Kaitokudo and Tekijuku, two academies that delivered front-line scholarship during the Edo period (1603-1867). This tradition is inherent in today's Osaka University which continues to achieve cutting-edge research results worthy of international recognition and provide society with distinguished researchers and professionals.

1838
Tekijuku

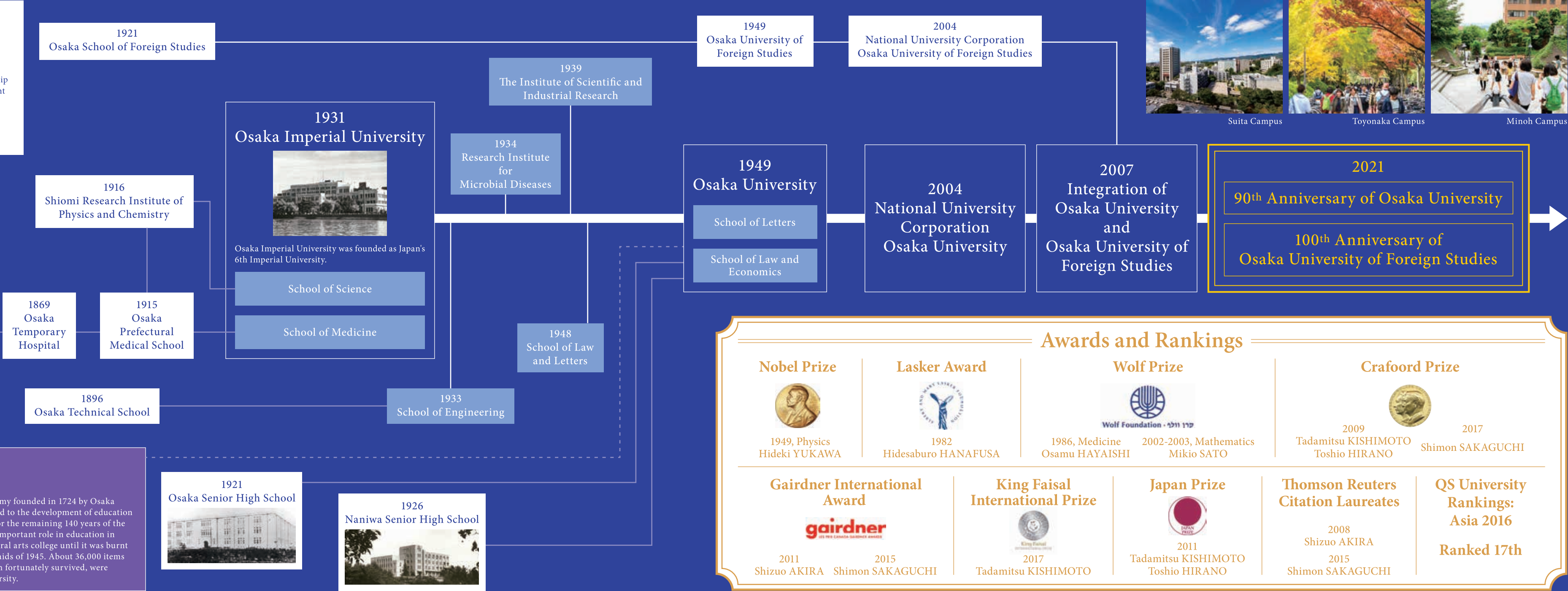


Tekijuku was a private academy in Osaka founded in 1838 by OGATA Koan, a physician and renowned educator. Young minds from all over Japan gathered there to learn, and many of them later played leading roles in the modernization of Japan during the Meiji period. Tekijuku was designated as a National Historical Landmark in 1941 and as an Important Cultural Asset in 1964.

1724
Kaitokudo



Kaitokudo was an academy founded in 1724 by Osaka merchants. It contributed to the development of education and business morality for the remaining 140 years of the Edo period, playing an important role in education in Osaka as a civic and liberal arts college until it was burnt down in the Osaka air raids of 1945. About 36,000 items from the academy, which fortunately survived, were donated to Osaka University.




Nobel Prize




1949, Physics
Hideki YUKAWA

Lasker Award



1982
Hidesaburo HANAFUSA

Wolf Prize



1986, Medicine
Osamu HAYAISHI

2002-2003, Mathematics
Mikio SATO

Crafoord Prize



2009
Tadamitsu KISHIMOTO
Toshio HIRANO

2017
Shimon SAKAGUCHI

Gairdner International Award



2011
Shizuo AKIRA

2015
Shimon SAKAGUCHI

King Faisal International Prize



2017
Tadamitsu KISHIMOTO

Japan Prize



2011
Tadamitsu KISHIMOTO
Toshio HIRANO

Thomson Reuters Citation Laureates

2008
Shizuo AKIRA

2015
Shimon SAKAGUCHI

QS University Rankings: Asia 2016

Ranked 17th



#INNOVATEITALL

One of the World's Leading Innovative Universities

4th Asia's Most Innovative Universities 2016 | Reuters | 18th The World's Most Innovative Universities 2015 | Reuters



Regulatory T cells (Tregs), discovered by Dr. Shimon Sakaguchi, have been drawing attention in cancer immunotherapy. However, since Tregs suppress the immune cells that attack tumors, they are thought to be disadvantageous for antitumor immunity. Sakaguchi and his group clarified that T-lymphocytes expressing a master transcription factor FoxP3 at a low level found in colorectal cancers (CRCs) facilitate cancer immunity. They found a certain intestinal bacteria species is involved in the induction of such FoxP3-low T cells enhancing tumor immunity. Their findings suggest new potentials in the treatment of CRCs via regulation of intestinal bacteria. (*Nat Med* 2016)



Harness the power of the brain.
As Director of Center for Information and Neural Networks (CiNet), I invite you to explore the remarkable world of neuroscience with us.
As we enter a new age of understanding the brain, we are closer to discovering its immense secrets about computation and information networks. For example, how can the brain process so much information with so little power requirements? How can it integrate diverse sources of information so efficiently? How can it make highly intelligent decisions so quickly? By answering these questions, we aim to harness the potential of neuroscience in applications to ICT, robot and AI technology.
CiNet is an interdisciplinary neuroscience technology research institute established by Osaka University and the National Institute of Information and Communication Technology (NICT). It is Japan's flagship initiative to develop a new generation of intelligent technologies that will revolutionize our lives and our society. Please join us and be part of the future!





#RESEARCHITALL



Masahiro MIURA
Professor, Graduate School of Engineering

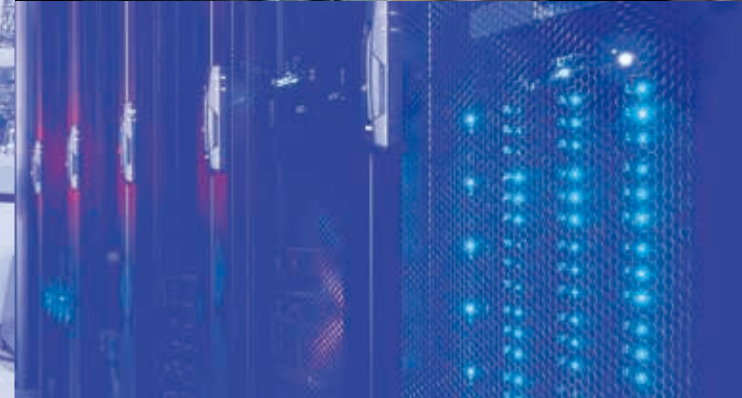
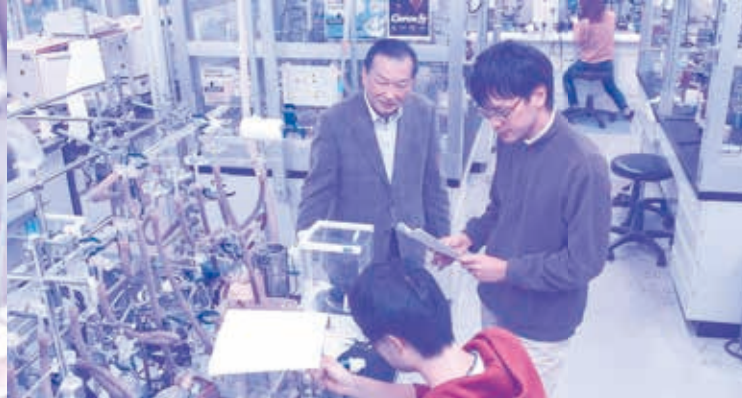
Cross-coupling reactions, which are indispensable in efficient synthesis of pharmaceutical products and organic electronic materials, along with other valuable organic substances, have currently become absolutely necessary technology in a wide variety of industrial fields. Dr. Miura developed a new method in which a given cross-coupling can be conducted without any halogenation or metalation of the starting substrates. Thus, the coupling reaction is able to be accomplished without the intermediate steps to provide the target molecule in an atom- and step-economic manner. The latest achievement: "Synthesis of Benzobis- and Benzotrisbenzofurans by Palladium-Catalyzed Multiple Intramolecular CH/CH Coupling" (*Chem. Lett.* 2016)



Yuki ARASE
Associate Professor,
Graduate School of
Information Science and
Technology

Language is the primary tool for communication, and thus, texts are the gold-mine of human knowledge. Such knowledge is critical for Artificial Intelligence (AI) as their brain resource. Meaning of texts is composed of not only words but structures that enable to relate words and convey complicated information. Dr. Arase is developing mechanisms that consider both words and structures for processing texts. One of her systems automatically identifies phrases with the same meaning by combining words and structural information in texts. Such language resources are important for mining valuable knowledge from texts. Furthermore, they contribute to develop talking-capability in AI for smooth and natural communication with people.

#RESEARCHITALL



Osaka
University
is ranked

first

among universities in
Japan for the number of
researchers included on
Thomson Reuters' list of
"The World's Most Influential
Scientific Minds" for 2016.

5

Immunology

2

Chemistry

1

Biology &
Biochemistry

1

Plant & Animal Science

Japan's Most
Innovative University

#INNOVATEITALL

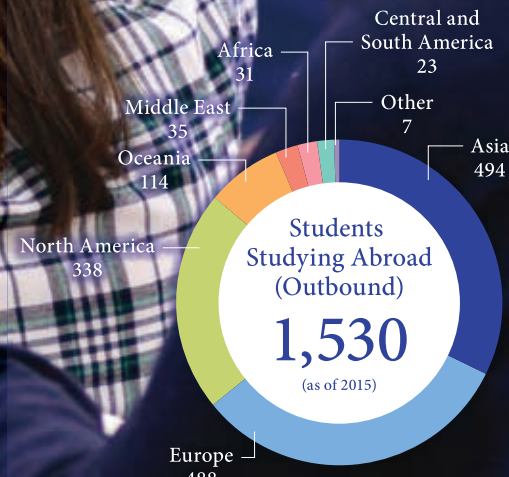
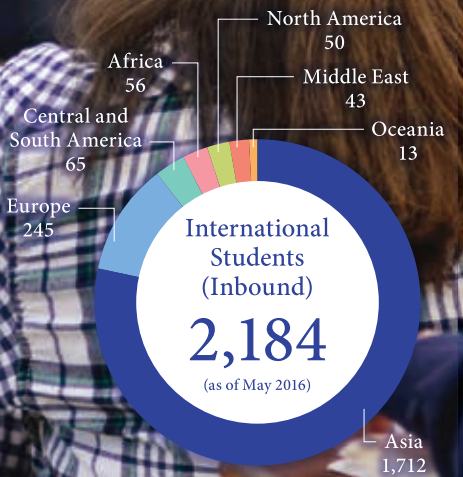
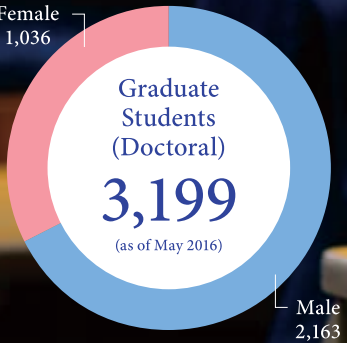
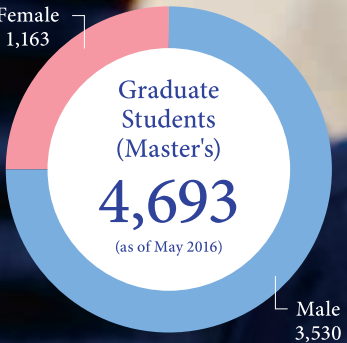
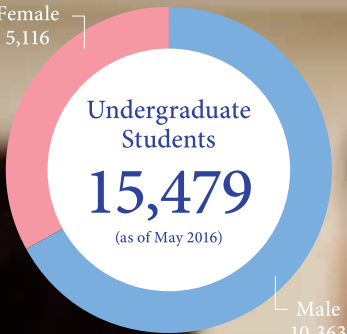
おもしろい研究
甲午夏日 梨雲

"Omoroi Kenkyu (Omoroi Research)"

What is "Omoroi Kenkyu"? The word "omoshiroi" means "interesting" in Japanese, but "omoroi" in the Osaka dialect takes this idea even further. "Omoroi" encompasses the emotions of excitement, curiosity, and anticipation all in one word. "Omoroi Kenkyu" is both pioneering and fascinating, and the fruits of this research come with the promise of future innovation.

Calligraphy by Ri-un

#DOITALL at OU Voices of Students



I am a member of the Osaka University Kyudo Club (Japanese archery). Kyudo is a traditional Japanese martial art that values performing movements correctly and in a beautiful manner, as well as hitting the target. I think that meeting with people of different generations and various schools is one of the greatest advantages of joining club activities.

Kanae MIYAGAWA
2nd Year Bachelor's
School of Law
(Japan)



Osaka University has a strong international focus and puts a lot of effort into intercultural programs. I am actively engaged in the Osaka University International Students Association which promotes intercultural exchange. At the same time, I could join cultural and academic trips organized by the Graduate School of Science and the Kishimoto Laboratory, my workplace.

Michael MOSER
2nd Year Master's
Graduate School of Science
(Germany)

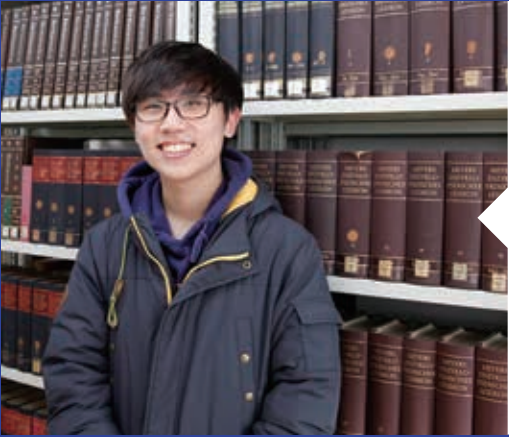
Studying at this university is wonderfully enjoyable! The three campuses are in a beautifully preserved country-like environment. The university dormitories are well kept, with one person per room, and have facilities that meet the needs of students. The university cafeterias offer international dishes with all the ingredients listed for those that cannot eat certain foods.

Thomas SABAGANGA
2nd Year Master's
Graduate School of Engineering Science
(Tanzania)



I study Portuguese, and I joined the Osaka University Cheerleading Club. In this club you can see the unique cultural fusion of Japanese and Western styles. Outside of the university, I was doing a part-time job at one of the most popular amusement parks in Osaka. It was a great opportunity to contribute to the community.

Chihiro NAKASHIMA
2nd Year Bachelor's
School of Foreign Studies
(Japan)



There are various club activities at Osaka University. Though I am studying at the School of Letters, I also play the violin with the Osaka University Symphony Orchestra. The members work hard before each concert. This university provides an excellent balance between study and club activities, allowing me to easily enrich my life!

Jiwon LEE
1st Year Bachelor's
School of Letters
(Korea)

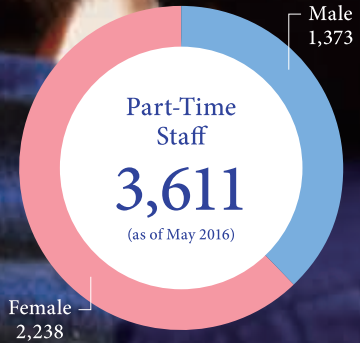
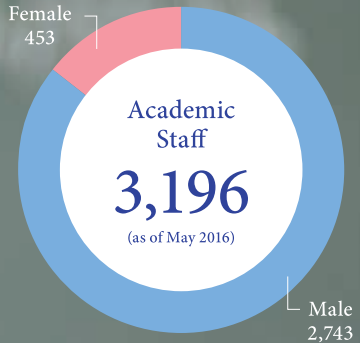


Though I have been here for short time, I am totally in love with Osaka and Osaka University. Academic and administrative staff are nice and friendly, and the local food is just excellent. One of my favorite foods is "Tenshin-Mabo," a Japanese style-Chinese dish, which is served at university cafeterias.

Yutong ZHAO
Research Student
School of Pharmaceutical Sciences
(China)

#DOITALL at OU

Voices of Faculty and Staff



Our department is very international, with close interaction between Japanese and international students, and has been successful in promoting a highly global environment. Working along with top students and researchers along with the great mentorship from my professor has motivated me to be a better researcher.

Sastia Prama PUTRI
 Assistant Professor
 Graduate School of Engineering
 (Indonesia)



I took maternity leave twice. My boss and colleagues are always supportive of my time off, so I have been able to concentrate on taking care of my family without worrying about work. I have also taken paid leave for family care without problems, allowing for a good work-life balance.

Shingo TABATA
 Administrative Staff
 The Institute of Scientific and Industrial Research
 (Japan)

I have only been here two years, but I feel I want to contribute to make Osaka University a global research hub in business history. Osaka University supports researchers who want to pursue their international academic career. Being part of an international exchange is also a challenging experience for young teachers.

Pierre-Yves DONZE
 Professor
 Graduate School of Economics
 (Switzerland)



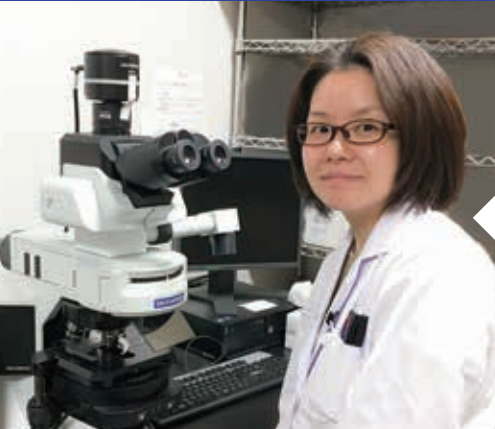
Osaka University is a leading comprehensive research university that creates an international academic environment in and around campuses, so that students and staff are open-minded. Working for the university is worthwhile and fulfilling for me.

Seungmo JUNG
 Administrative Staff
 International Affairs Division
 Department of International Affairs
 (Korea)



Osaka University has attractive systems designed for both academic and administrative staff. Using the Leave of Absence for Personal Improvement System, I studied labor law at the Graduate School of Law and Politics for two years. Now I am back to work, using the knowledge and theories that I learned.

Masatoshi SHIGEMURA
 Administrative Staff
 Personnel Division
 Department of General Affairs
 (Japan)



After the birth of my child, I applied to Osaka University's Research Collaborator Support System. They supplied an excellent research assistant who assisted me in my research, allowing me to smoothly finish my research tasks. This system is an absolutely essential service for the balance of work and life.

Yukiko NAKAMURA
 Assistant Professor
 Graduate School of Medicine
 (Japan)

#DOITALL

Osaka University at a Glance (as of 2017)

11 Schools

Letters
Human Sciences
Foreign Studies
Law
Economics
Science
Medicine
Dentistry
Pharmaceutical Sciences
Engineering
Engineering Science

16 Graduate Schools

Letters
Human Sciences
Law and Politics
Economics
Science
Medicine
Dentistry
Pharmaceutical Sciences
Engineering
Engineering Science
Language and Culture

International Public Policy
Information Science and Technology
Frontier Biosciences
Law School
Child Development

4 University Libraries

Main Library
Life Sciences Library
Science and Engineering Library
International Studies Library

2 University Hospitals

Osaka University Hospital
Osaka University Dental Hospital

Administration Bureau

Osaka University Nakanoshima Center

Research Institutes, Centers and Facilities

Research Institute for Microbial Diseases
The Institute of Scientific and Industrial Research
Institute for Protein Research
Institute of Social and Economic Research
Joining and Welding Research Institute
Low Temperature Center
Research Center for Ultra-High Voltage Electron Microscopy
Radioisotope Research Center
Research Center for Environmental Preservation
Center for International Education and Exchange
International Center for Biotechnology
Research Center for Solar Energy Chemistry
The Museum of Osaka University
Health Care Center
Global Center for Medical Engineering and Informatics
Center for Mathematical Modeling and Data Science
Center for Scientific Instrument Renovation and Manufacturing Support
Center for Japanese Language and Culture
Institute for NanoScience Design
Intellectual Property Center
Research Center for Nuclear Physics
Cybermedia Center
Institute of Laser Engineering

Education and Research Support Organizations

Institute for Advanced Co-Creation Studies
Institute for Academic Initiatives
Open and Transdisciplinary Research Initiative
Institute for Datability Science
Center for Education in Liberal Arts and Sciences
Center for Gender Equality Promotion
Center for the Study of Co* Design
Center for Global Initiatives
Tekijuku Commemoration Center
Kaitokudo for the 21st Century
Office for Industry-University Co-Creation
Office for Information and Communications Technology Services
Department for the Administration of Safety and Hygiene
Department of Environment and Energy Management
Office of the General Counsel

International Advanced Research Institute

Immunology Frontier Research Center

Overseas Centers

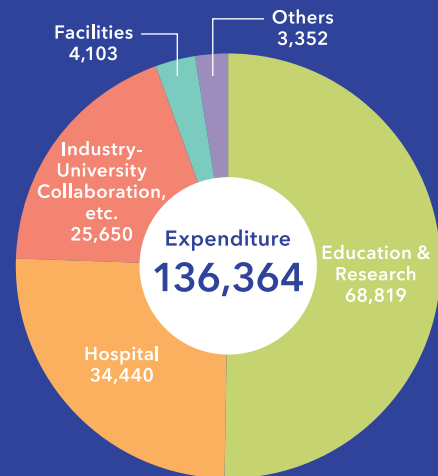
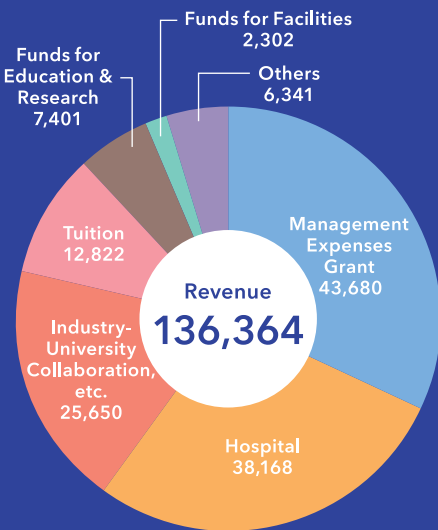
North American Center for Academic Initiatives (San Francisco Office)
European Center for Academic Initiatives (Groningen Office)
ASEAN Center for Academic Initiatives (Bangkok Office)
East Asian Center for Academic Initiatives (Shanghai Office)

Institute for Advanced Interdisciplinary Research

Center for Information and Neural Networks

Budget

FY2016, in millions of yen
(1 USD=112 JPY as of April 1, 2016)





Suita Campus

Nakanoshima Campus

Toyonaka Campus

Minoh Campus

Osaka University has
4 Campuses and **1** Office

大阪大学
OSAKA UNIVERSITY

東京オフィス
Tokyo Office

Tokyo Office

113 Inter-University and 556 Inter-Faculty Academic Exchange Agreements (as of February 1, 2017)

Australia

- Australian National University
- Monash University
- The University of Adelaide
- The University of Queensland

Austria

- University of Vienna

Belgium

- Interuniversitair Micro-Electronica Centrum vzw (IMEC)
- Université catholique de Louvain

Brazil

- University of São Paulo

Canada

- McGill University
- McMaster University
- The University of British Columbia
- University of Toronto

China

- Beijing Normal University
- The Chinese University of Hong Kong
- Fudan University
- Nanjing University
- Peking University
- Shanghai Jiao Tong University
- Tongji University
- Tsinghua University
- The University of Hong Kong
- Wuhan University
- Xi'an Jiaotong University
- Zhejiang University

Denmark

- University of Copenhagen

Egypt

- Alexandria University

Finland

- Åbo Akademi University
- University of Helsinki

France

- Aix-Marseille University
- Communauté Université Grenoble Alpes
- École Nationale Supérieure de Chimie de Paris
- École Polytechnique
- The National Center for Scientific Research
- Pierre & Marie Curie University
- University of Bordeaux
- University of Strasbourg

Germany

- Bielefeld University
- Friedrich-Alexander-Universität Erlangen-Nürnberg
- Goethe University Frankfurt
- Heidelberg University
- Ludwig-Maximilians-Universität München
- Ruhr-Universität Bochum
- RWTH Aachen University
- Technical University of Munich
- Technische Universität Berlin
- University of Augsburg
- The University of Göttingen

Hungary

- Eötvös Loránd University (ELTE)

India

- Indian Institute of Technology, Hyderabad

Indonesia

- Airlangga University
- Bandung Institute of Technology (ITB)
- Universitas Gadjah Mada
- Universitas Indonesia

Korea

- Changwon National University
- Chonnam National University
- Chung-Ang University
- Chungnam National University
- Gyeongsang National University
- Hanyang University
- Pusan National University
- Seoul National University
- Yonsei University

Mexico

- National Autonomous University of Mexico (UNAM)

Mongolia

- National University of Mongolia

Myanmar

- University of Yangon

The Netherlands

- Delft University of Technology
- University of Groningen

Peru

- Pontifical Catholic University of Peru

The Philippines

- Ateneo de Manila University
- De La Salle University
- University of the Philippines

Qatar

- Qatar University

Russia

- Russian Academy of Sciences
- Saint Petersburg University

Saudi Arabia

- King Abdulaziz University

Spain

- Universidad Autónoma de Madrid
- University of Valladolid

Sweden

- Karolinska Institutet
- KTH Royal Institute of Technology
- University of Gothenburg

Switzerland

- École Polytechnique Fédérale de Lausanne (EPFL)
- Eidgenössische Technische Hochschule Zürich

Taiwan

- National Cheng Kung University
- National Chiao Tung University
- National Taiwan University
- National Tsing Hua University

Thailand

- Chiang Mai University
- Chulalongkorn University
- Department of Medical Sciences, Ministry of Public Health
- Kasetsart University
- King Mongkut's University of Technology Thonburi
- Mahidol University
- Thammasat University

UK

- University College London
- University of Leeds
- The University of Nottingham
- The University of Sheffield

USA

- Cornell University
- Indiana University
- Nazareth College of Rochester
- Purdue University
- Rice University
- Texas A&M University
- University of Georgia
- University of California
- University of California, Berkeley
- University of Washington
- Wesleyan College

Vietnam

- Can Tho University
- Vietnam Academy of Science and Technology
- Vietnam-Japan University
- Vietnam National University, Hanoi
- Vietnam National University-Ho Chi Minh City

Universities listed above are partner universities and institutions that have concluded inter-university academic exchange agreements with Osaka University.

Academic Programs

[🏠 www.osaka-u.ac.jp/sp/whyou/](#) [🏠 www.osaka-u.ac.jp/en/admissions](#)

Degree Programs in English

	Department	Course / Program	URL
Undergraduate Programs	Human Sciences	Human Sciences International Undergraduate Degree Program	🏠 g30.hus.osaka-u.ac.jp/
	Science, Engineering, Engineering Science	Chemistry-Biology Combined Major Program	🏠 cbcmp.icou.osaka-u.ac.jp/
Graduate Programs	Science	Special Integrated Science Course	🏠 www.bio.sci.osaka-u.ac.jp/global30/SISC/HOME.html
		International Physics Course	🏠 www.rcnp.osaka-u.ac.jp/~ipc
	Engineering	Biotechnology Global Human Resource Development Program	🏠 www.bio.eng.osaka-u.ac.jp/gh_resour_prog/index.html
		Chemical Science Course	🏠 www.chem.eng.osaka-u.ac.jp/appl/eng/CSC_e/index_e.html
		Quantum Engineering Design Course	🏠 www.dyn.ap.eng.osaka-u.ac.jp/QEDC/home.html
		International Program of Maritime and Urban Engineering	🏠 maritime-urban.naoe.eng.osaka-u.ac.jp/
	Engineering Science	Special Program of “Engineering Science 21 st Century”	🏠 www.es.osaka-u.ac.jp/en/programs/admissions.html
	Information Science and Technology	Information Technology Special Course in English	🏠 www.ist.osaka-u.ac.jp/english/admission/guidelines.html

Double Degree Programs

[🏠 www.osaka-u.ac.jp/en/guide/announcement/main/Double_Degree_Program](#)

The double degree program allows graduate students to register as a regular student at Osaka University and an overseas university simultaneously and obtain degrees from both.

Non-Degree Programs

[🏠 www.osaka-u.ac.jp/en/international/inbound/exchange_program](#)

Programs for Short-Term Exchange Students

There is a variety of short-term programs (one year or less) for students from universities abroad that have student exchange agreements with Osaka University.

Non-Regular Students

Osaka University accepts students at graduate schools / institutes as research students or credited auditors, etc. For further information, please contact the relevant graduate school / institute.

Support for International Students and Researchers

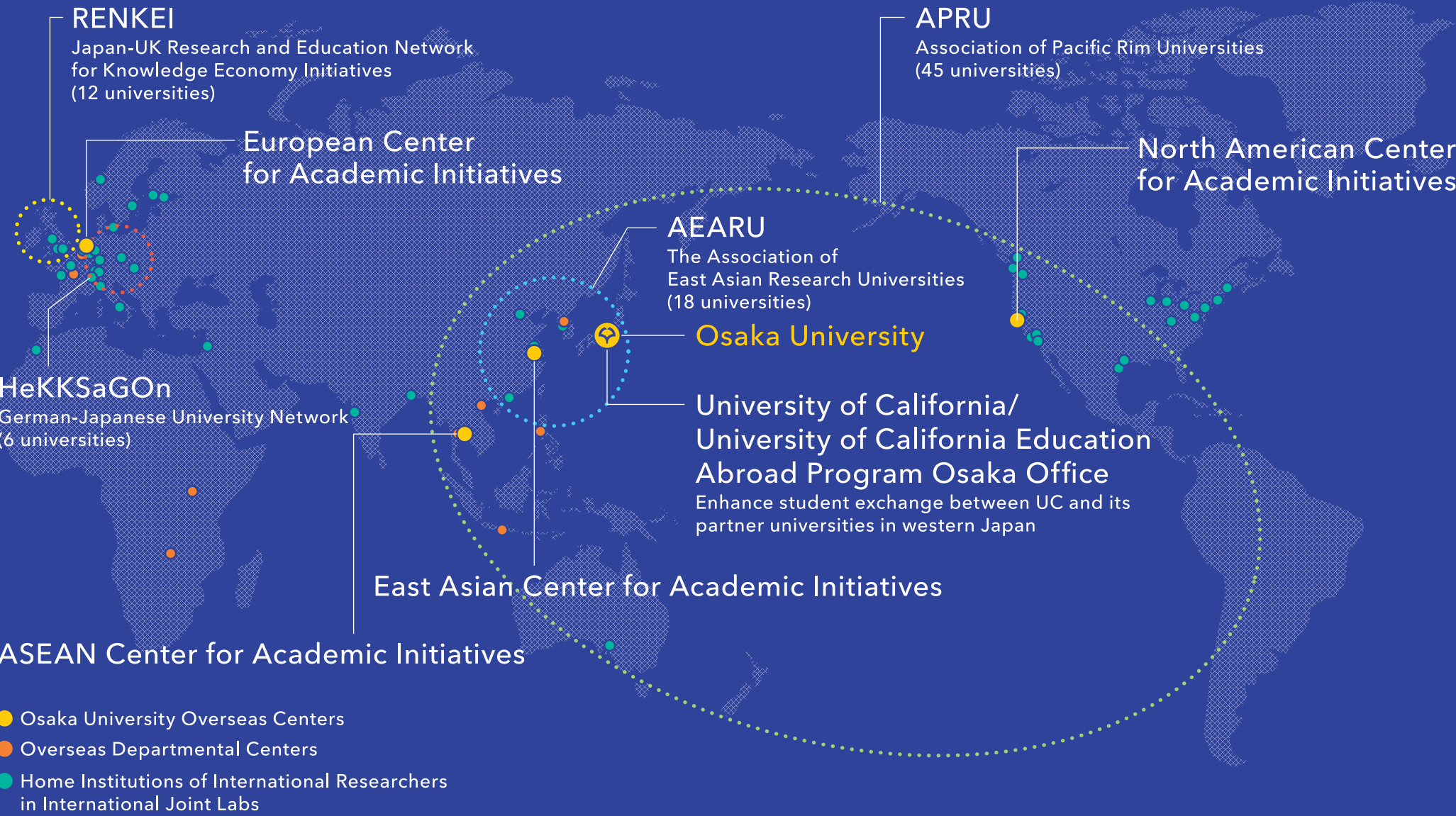
Center for International Education and Exchange

Provides Japanese language programs, exchange activities, counseling, advice, etc.
[🏠 ciee.osaka-u.ac.jp/en/](#)

Support Office for International Students and Researchers

Provides information about VISA procedures and accommodation.
[🏠 iss-intl.osaka-u.ac.jp/supportoffice](#)

Global Academic Network



International Joint Labs

[🏠 www.osaka-u.ac.jp/en/research/researcher_sp/international_joint](#)

International Joint Labs bring researchers from overseas together for collaborative research at Osaka University.

Campus Locations and Transportation

