

# Osaka University Global Village Tsukumodai

## Dormitory



大阪大学  
OSAKA UNIVERSITY



<https://globalvillage.icho.osaka-u.ac.jp/tsukumodai>



Global court



Bird's-eye view



Open lounge

## Experience Global life! Grow Human interactions! It's a New student dormitory!

### Outline of Global Village Tsukumodai

- Number of rooms: 396 rooms in the student dormitory, 304 rooms in the university staff housing.
- Common-use facilities  
Global court, open lounge, Japanese-style rooms, community space, laundry, etc.  
A convenience store and other commercial facilities are located adjacent to Global Village Tsukumodai.

### Outline of the student dormitory (300 rooms in shared residential units)

- The dormitory is a 10-story building with separate male and female living areas.
- The residential units are shared by Japanese and international students. (5-, 7- and 9-person units are available.)
- Living rooms, kitchens and toilets are shared-use.
- Shared bathrooms and delivery lockers are located on the first floor.
- Private rooms and public areas are fully furnished. (See the reverse side.)

### Outline of the student dormitory (96 single-occupancy units)

- Each unit comes with a bathroom, washroom, toilet, mini-kitchen and closet.

### Security measures

- Dormitory keepers are in service around the clock.
- The entrance to the student dormitory and a door to each residential unit have an automatic lock system.
- Security cameras are installed.

### Events

- Various events to from friendships among residents; Welcome party, Tanabata(Star) festival, Karuta tournament and more.

### Educational programs

- Educational programs such as Tsukumodai Seminar, a cross-cultural understanding program, and a co-creation workshop are provided in the dormitory for occupants in shared residential units. (Private room type residents are also available to participate if there are capacities.)

### Access

- Three minutes on foot from Yamada Station on Hankyu Railway Senri Line and Osaka Monorail.
- Convenient access to and from the Suita, Toyonaka and new Minoh campuses of Osaka University.

### Residential fees including tax 【 to be paid monthly, in addition to the one-time fee on moving in 】 ※Price per person

Residential unit		Rent	Mandatory rental fee (*1)	Common area charge (*2)	One-time fee on moving in
5-person unit	5-person unit x 7	40,500 yen	8,910 yen	12,500 yen	9,900 yen
7-person unit	7-person unit x 7	39,000 yen	8,910 yen	12,500 yen	9,900 yen
9-person unit	9-person unit x 24	37,400 yen	8,910 yen	12,500 yen	9,900 yen
Single-occupancy unit	Single-occupancy unit x 96	56,000 yen	4,950 yen	2,000 yen	14,300 yen

\*1: The fee covers furniture and fixtures in the common area of a residential unit and each private room (See the reverse side.) \*2: The common area charge of a shared residential unit includes utilities (electricity, gas and water) for each private room and the common area. (Utilities for a single-occupancy unit are provided under an individual contract.) \*3: In addition, there are a mandatory Internet fee of 1,320 yen including tax and optional fees including car parking (graduate students only), bicycle parking and rental locker etc.(option for a fee)

### Duration of occupancy

#### [Shared residential unit]

- International students: Up to 24 months
- Japanese students (Undergraduate only): Standard years of study

#### [Single-occupancy unit]

- Graduate students: Standard years of study
- Undergraduate students: Standard years of study

### No. of applicants to be accepted and application period

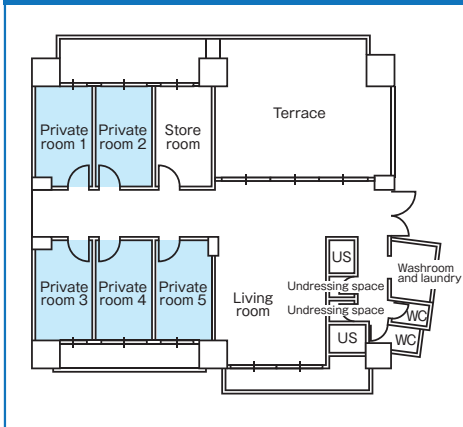
To be announced on the website of Osaka University.

Inquiries: Housing Section, Property Management Division, Department of Finance, Osaka University  
zaimu-sisan-ho-unei@office.osaka-u.ac.jp

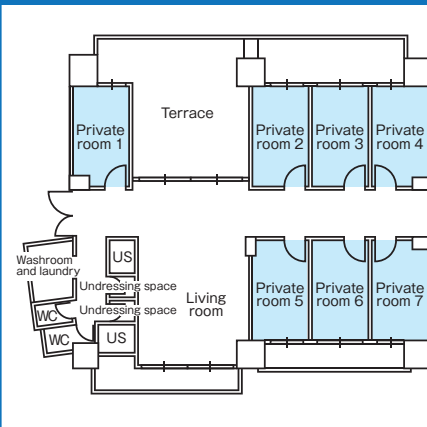
## Outline of shared residential units

●The locations of shower, toilet and other facilities differ slightly depending of the floor. ●Three rooms have a barrier-free design.

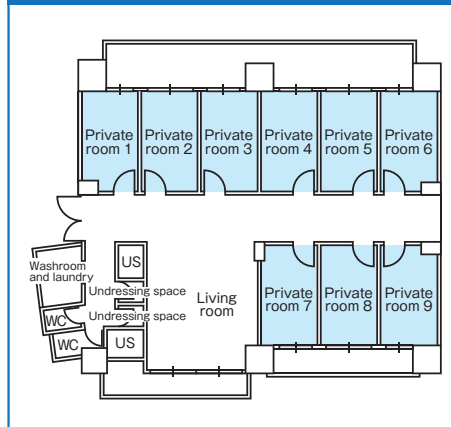
### 5-person unit (7 units)



### 7-person unit (7 units)



### 9-person unit (24 units)



### ■ Mandatory rental equipment in a private room

Air conditioner, desk, chair, bookshelf, bed, bedlinen, curtains, desk lamp, clothes drying stand, Wi-Fi (subscription fee required)

### ■ Common area equipment



Air conditioner



Refrigerator



IH cooker



TV set



Dining table and chairs



Washing machine and dryer



Microwave oven



Cupboard



Iron



Vacuum cleaner



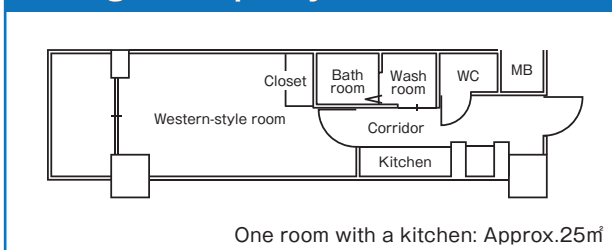
Wi-Fi



Private room area: Approx. 9㎡

## Outline of a single-occupancy unit

### 96 single-occupancy units



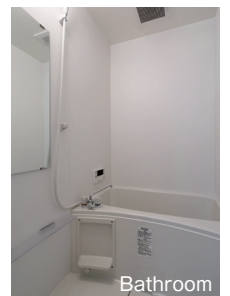
One room with a kitchen: Approx. 25㎡



Western-style room



Mini-kitchen

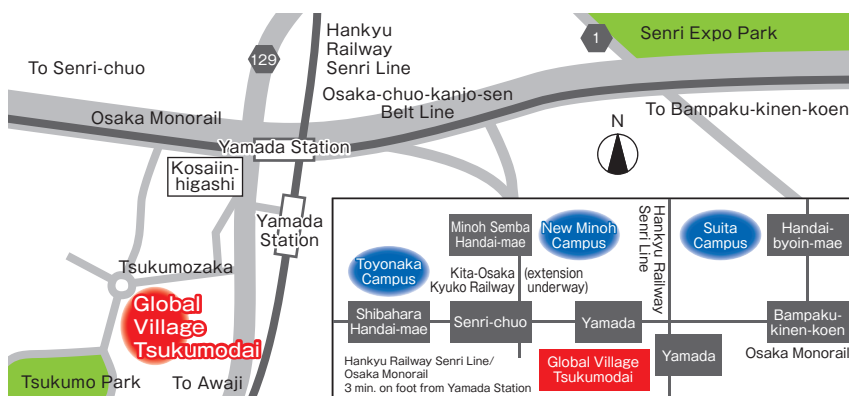


Bathroom

### ■ Mandatory rental equipment

Air conditioner, bed frame with drawers (excluding mattress), curtains, IH cooker, Wi-Fi (subscription fee required)

## Access



## How to apply

For details about application and screening procedures, please see the following website.

<https://globalvillage.icho.osaka-u.ac.jp/tsukumodai>

Housing Section, Property Management Division, Department of Finance,  
Osaka University  
zaimu-sisan-ho-unei@office.osaka-u.ac.jp

\*The drawings, floor plans and descriptions are subject to change.