

# Global Village Tsukumodai

## Dormitory



THE UNIVERSITY OF  
OSAKA

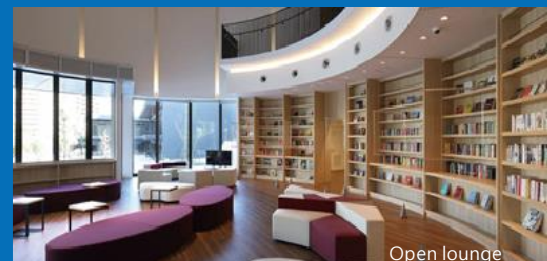
<https://globalvillage.icho.osaka-u.ac.jp/tsukumodai>



Global court



Bird's-eye view



Open lounge

## Welcome to a place where global connections blossom !

### Outline of Global Village Tsukumodai

- Number of rooms: 396 rooms in the student dormitory, 304 rooms in the university staff housing.
- Common-use facilities  
Global court, open lounge, Japanese-style room, community space, laundry, etc.  
A convenience store and other commercial facilities are located adjacent to Global Village Tsukumodai.

### Shared Unit (300 rooms)

- The dormitory is a 10-story building with separate male and female living areas.
- The residential units are shared by Japanese and international students. (5-, 7- and 9-person units are available.)
- Living rooms, kitchens and toilets are shared-use.
- Shared bathrooms and delivery lockers are located on the first floor.
- Private rooms and public areas are fully furnished. (See the reverse side.)

### Single room (96 rooms)

- Each unit comes with a bathroom, washroom, toilet, mini-kitchen and closet.

### Security measures

- Dormitory keepers are in service around the clock.
- The entrance to the student dormitory and a door to each residential unit have an automatic lock system.
- Security cameras are installed.

### Events

- Various events to form friendships among residents; Welcome party, Tanabata(star) festival, Karuta tournament and more.

### Access

- Three minutes on foot from Yamada Station on Hankyu Railway Senri Line and Osaka Monorail.
- Convenient access to and from the Suita, Toyonaka and Minoh campuses of the University of Osaka.

### Residential fees including tax 【 to be paid monthly, in addition to the one-time fee】 ※per person

**\*As of April 1, 2025**

| Residential unit |                    | Rent       | Mandatory rental fee(*1) | Common area charge(*2) | One-time fee on moving in |
|------------------|--------------------|------------|--------------------------|------------------------|---------------------------|
| 5-person unit    | 5-person unit x 7  | 40,500 yen | 8,910 yen                | 12,500 yen             | 9,900 yen                 |
| 7-person unit    | 7-person unit x 7  | 39,000 yen | 8,910 yen                | 12,500 yen             | 9,900 yen                 |
| 9-person unit    | 9-person unit x 24 | 37,400 yen | 8,910 yen                | 12,500 yen             | 9,900 yen                 |
| Single room      | Single room x 96   | 56,000 yen | 4,950 yen                | 2,000 yen              | 14,850 yen                |

\*1: The fee covers furniture and fixtures in the common area of a residential unit and each private room (See the reverse side.) \*2: The common area charge of a shared residential unit includes utilities (electricity, gas and water) for each private room and the common area. (Utilities for a single-occupancy unit are provided under an individual contract.)

\*3: There are a mandatory Internet fee of 1,320 yen including tax and optional fees including car parking (graduate students only), bicycle parking and rental locker fees.

### Duration of occupancy

#### [Shared unit]

- International students: One year ■ Japanese students (Undergraduate only): Standard years of study

#### [Single room]

- Graduate students: Standard years of study ■ Undergraduate students: Standard years of study

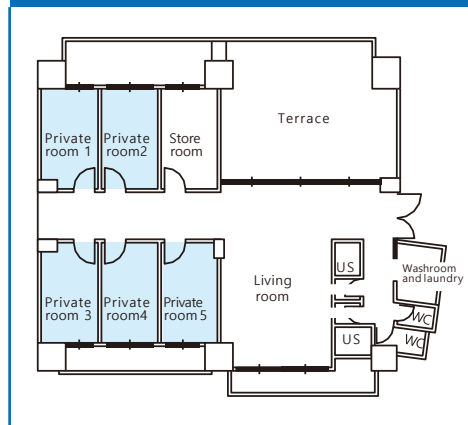
**Inquiries: Housing Section, Property Management Division, Department of Finance**

**Mail: [gakuryo@ml.office.osaka-u.ac.jp](mailto:gakuryo@ml.office.osaka-u.ac.jp)**

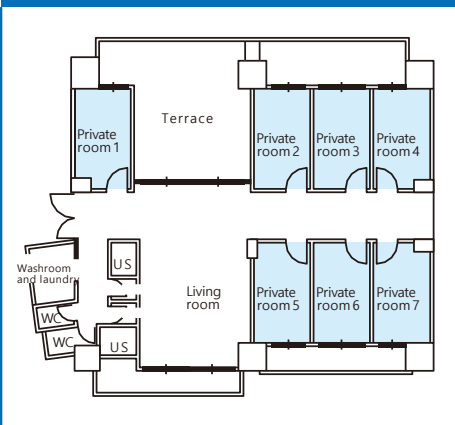
## Outline of shared Unit

●The locations of shower, toilet and other facilities differ slightly depending on the floor. ●Three rooms have a barrier-free design.

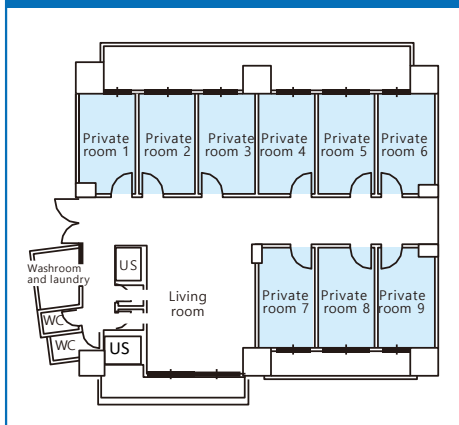
### 5-person Unit (7 units)



### 7-person Unit (7 units)



### 9-person Unit (24 units)



### ■ Mandatory rental equipment in a private room

Air conditioner, desk, chair, bookshelf, bed, bedlinen, curtains, desk lamp, clothes drying stand, Wi-Fi (subscription fee required)

### ■ Common area equipment



Air conditioner



Refrigerator



IH cooker



TV set



Dining table and chairs



Washing machine and dryer



Microwave oven



Cupboard



Iron



Vacuum cleaner



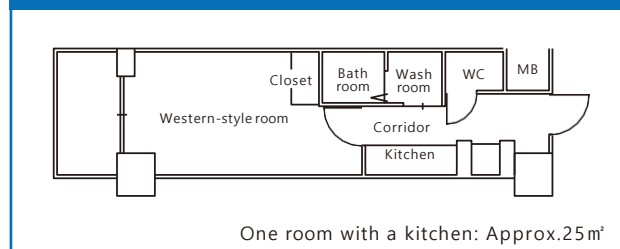
Wi-Fi



Private room: Approx. 9m²

## Outline of Single room

### 96 Single rooms



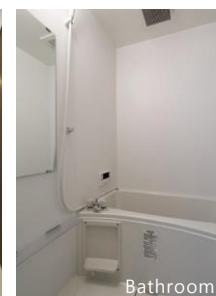
One room with a kitchen: Approx. 25m²



Western-style room



Mini-kitchen

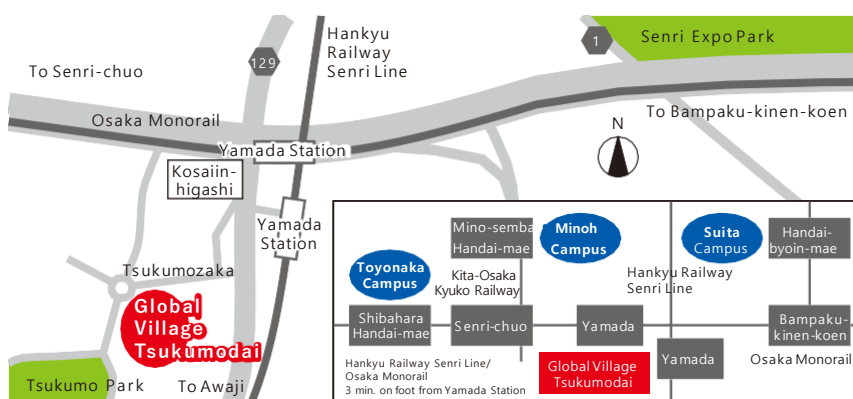


Bathroom

### ■ Mandatory rental equipment

Air conditioner, bed frame with drawers (excluding mattress), curtains, IH cooker, Wi-Fi (subscription fee required)

## Access



## How to apply

For details about application and screening procedures, please see the following website.  
<https://globalvillage.icho.osaka-u.ac.jp/tsukumodai-en/index.html>

### <Inquiries>

For Application Procedures:

International Student Affairs Division

Mail: [supportinfo@ml.office.osaka-u.ac.jp](mailto:supportinfo@ml.office.osaka-u.ac.jp)

For Facilities: Housing Section

Mail: [gakuryo@ml.office.osaka-u.ac.jp](mailto:gakuryo@ml.office.osaka-u.ac.jp)